

Table of Contents

1. INTRODUCTION.....	2
1.1 ABOUT PDMP3	2
1.2 FEATURES.....	2
2. HOW TO USE MP3 PLAYER	3
2.1 INSTALL/REPLACE THE BATTERY.....	3
2.2 BUTTON ASSIGNMENT.....	3
2.2.1. <i>Power ON & Play / Pause / Power OFF</i>	3
2.2.2 <i>Fast forward : Press this key to skip to next song</i>	3
2.2.3 <i>Backward : Press this key to go back to the previous song</i>	3
2.2.4 <i>Volume Up : Press this key to turn the volume up</i>	3
2.2.5 <i>Volume Down : Press this key to turn the volume down</i>	3
2.3 EARPHONE	4
2.4 STATUS LED	5
2.4.1 <i>Green LED: MP3 Mode</i>	5
2.4.2 <i>Red LED: USB Mode</i>	5
2.5 FUNCTION: USB REMOVABLE DISK.....	5
2.6 WARNINGS	6
3. WINDOWS DRIVER INSTALLATION	6
3.1 WINDOWS 98 / WINDOWS 98 SE INSTALLATION	6
3.2 MODIFY DRIVER FOR WIN 98 / WIN 98 SE.....	7
3.3 REPAIR DRIVER FOR WIN 98 / WIN 98 SE	8
3.4 REMOVE DRIVER FROM WIN 98 / WIN 98 SE	8
4. IMPORTANT NOTICES.....	9

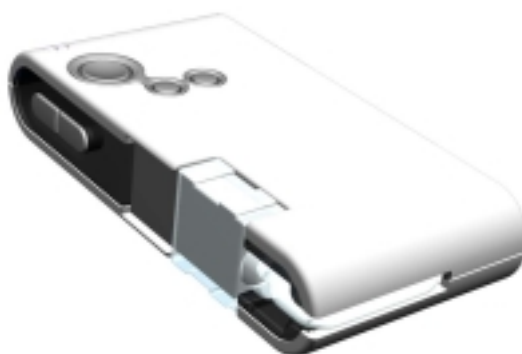
1. Introduction

1.1 About PDMP3

PDMP3 is more than a MP3 Player. It combines MP3 Player with a removable hard drive.

PDMP3 is a user-friendly device; simply plug it into the USB port of your notebook or desktop computer.

With the long-lasting AAA (alkaline) battery, it is so convenient that you can take your PDMP3 wherever you go and enjoy high quality songs.



1.2 Features

Memory:	CURRENTLY AVAILABLE: 64MB / 128MB / 256MB / 512MB / 1GB
Supports music format	MP3
Earphone jack:	3.5 mm
Audio output:	5mW + 5mW
Output frequency range	20HZ – 20KHZ
Battery / Power	
Battery	One AAA Alkaline battery allows continual use of 12 hours.
power saving mode	To reduce power consumption
Low Power consumption	Write 39.1mA ~ 39.4mA / Read 35.0mA ~ 36.1mA
No external power is required	DC 4.5V ~ 5.5V from USB port.
USB specification	Revision 1.1
Transferring rate	Up to 12Mbit per second at "Full Speed"
Hot Plug & Play	Enables you to use PDMP3 at anytime, anywhere.
Drivers / OS	
No drivers needed	Supports Windows ME / 2000/ XP, Mac OS 8.6 or above and Linux 2.4.0 or above.
Driver supported	Windows 98/ 98SE
Green LED	MP3 Mode
	Green light will flash when playing.
Red LED	USB Mode
	Plug the device into a USB port and unplug the earphone, the red light will be on.
	Red light will turn off if there is no data transfer for more than 6 seconds.
	Red light will flash during file transfer.

Specifications	
Data retention	Durable solid-state storage – data retention for at least 10 years
Erase Cycles	100,000 times
Read/Write Speed of USB interface:	Read: 1055KB/s Write: 700KB
Acoustic noise	0dB (at one meter)
Size:	77(L) x 38(W) x 15(H) mm
Unit weight	32g (not including battery)
Approvals	CE and FCC certificate of approval

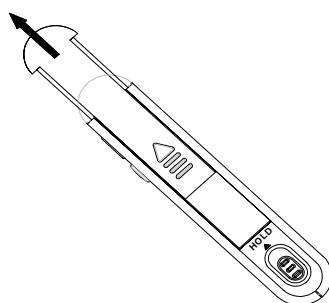
As long as the device remains in the MP3 mode, it will remember the last song you played. When you press the "Play button (even after changing the battery) it will start playing the last song you were listening to.

The play list will be cleared when you switch to the USB mode and the playback will start from the beginning of the new play list.

2. How to use MP3 player

2.1 Install/Replace the battery

- (1) Remove the battery cover by sliding out according to the arrow mark.
- (2) Insert battery with the correct polarity.
- (3) Place the battery cover back.



2.2 Button Assignment

The PDMP3 has five function keys (buttons).

2.2.1. Power ON & Play / Pause / Power OFF

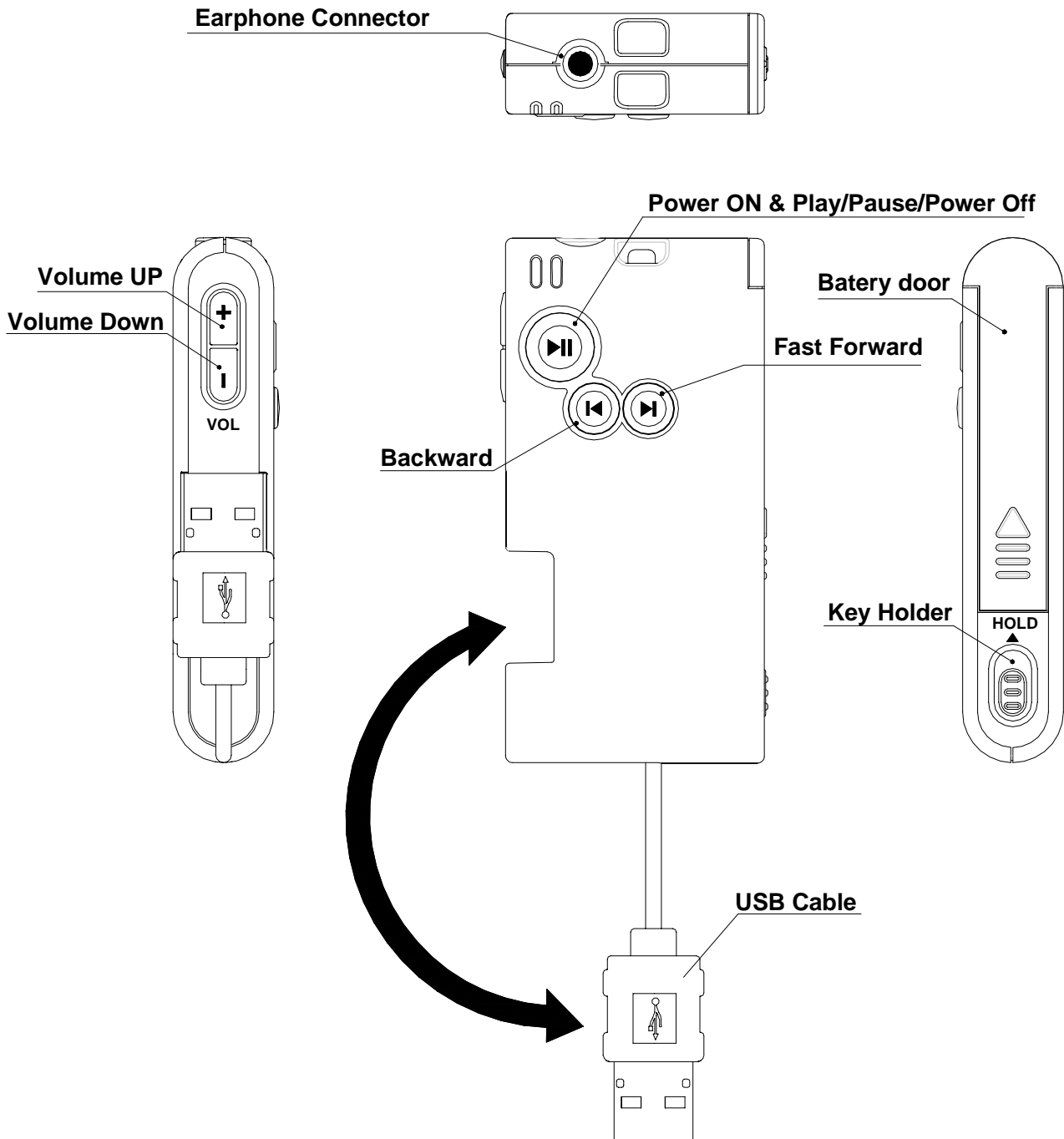
- I. **Power On & Play** : When the power is off, press this key once and release. PDMP3 will enter the play mode and the green LED light will flash.
- II. **Pause** : In play mode, press this key once to enter the pause mode, and the green LED light will keep ON
- III. **Power Off** : Press and hold this key for 2~5 seconds, PDMP3 will be powered off, and so does the green LED.

2.2.2 Fast forward : Press this key to skip to next song.

2.2.3 Backward : Press this key to go back to the previous song.

2.2.4 Volume Up : Press this key to turn the volume up.

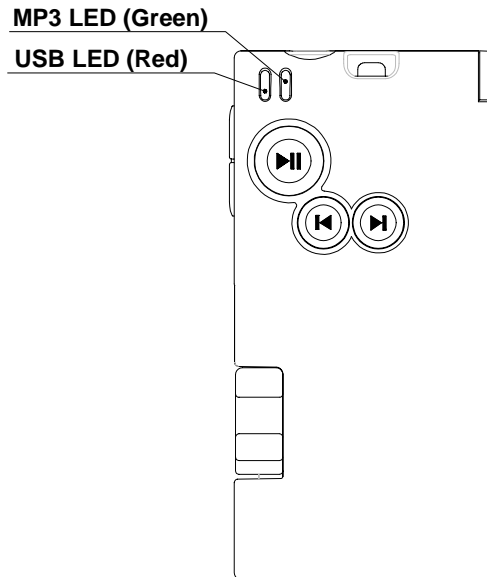
2.2.5 Volume Down : Press this key to turn the volume down



2.3 Earphone

- The device is a MP3 player only if an earphone is plugged into the earphone connector.
- The device becomes an USB flash disk only when you plugged the device into a USB port and unplugged the earphone.
- The diameter of the earphone connector is 3.5mm.
- The earphone plug must be a 4 - pole design.

2.4 Status LED



2.4.1 Green LED: MP3 Mode

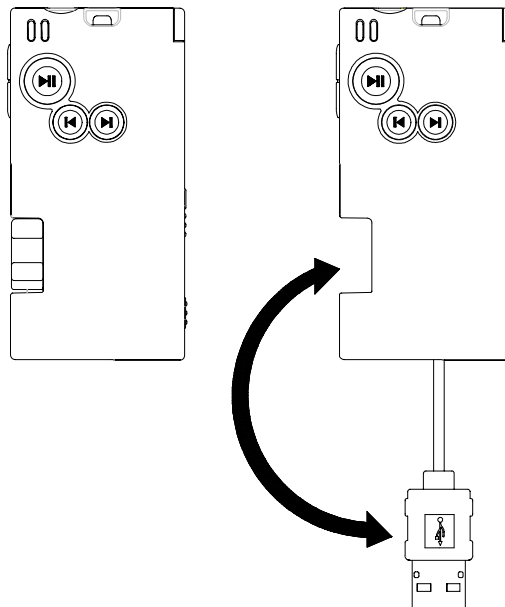
In play mode, the green light will flash.

2.4.2 Red LED: USB Mode.

- Plug the device into an USB port and unplug the earphone, the red LED will be on.
- Red LED will be off when there is no data transfer after 6 seconds.
- Red LED will flash during data transferring.

2.5 Function: USB removable disk

The PDMP3 functions as an external drive to your computer when it is plugged into the USB port of your system.



First, you must pull out the USB cable and insert the cable into USB port on your computer. In this mode, data can be stored into the PDMP3 by dragging the files onto the removable disk drive letter, or by the same way as you copy files onto your computer's hard drive. The red LED goes on when PDMP3 is under the USB mode. It will flash during data transferring and goes off when there is no data transfer after 6 seconds.

2.6 Warnings

- Do not attempt to disassemble or alter any part of the device that is not described in this manual.
- Keep your PDMP3 far away from water or any liquid. In the event that water or any liquid enter the interior of the device, immediately unplug the device from the computer and ask for help from a qualified person, say, the distributor.
- Do not place the product near a heat source or expose them to direct flame or sunshine.
- Alkaline battery is strongly recommended to enable your PDMP3 for continual playing of 12 hours.
- For better audio quality and battery life time, a 32 Ω earphone is strongly recommended.

3. Windows driver installation

3.1 Windows 98 / Windows 98 SE Installation

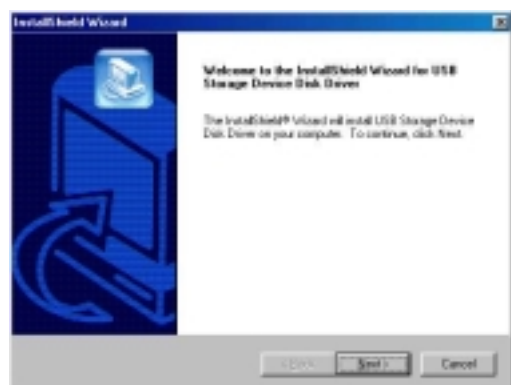
1. Go to floppy disk drive A or: CD-ROM drive.



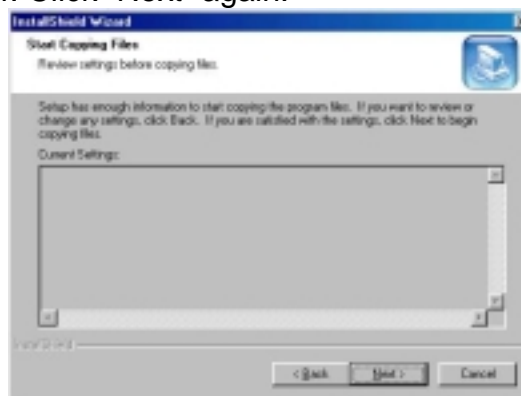
2. Execute "Setup.exe" by double click on the icon.



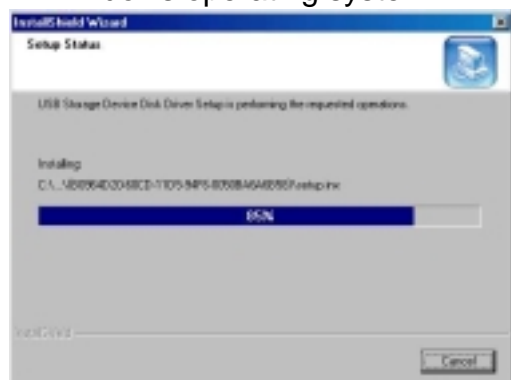
3. Click "Next".



4. Click "Next" again.



5. Computer will install all the necessary files into your Windows operating system.



6. Click "OK" to restart the computer.

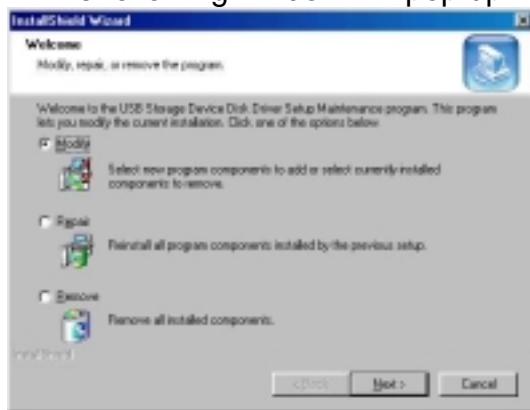


- After restart, plug the PDMP3 to the USB port on your computer. It will automatically find the new hardware. If setup was correctly carried out, you should find a "Removable Disk" shown in My Computer.

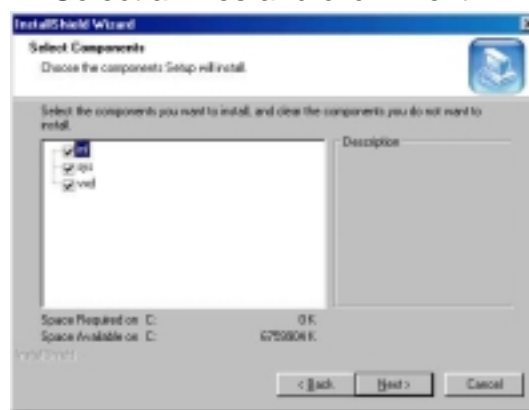


3.2 Modify driver for Win 98 / Win 98 SE

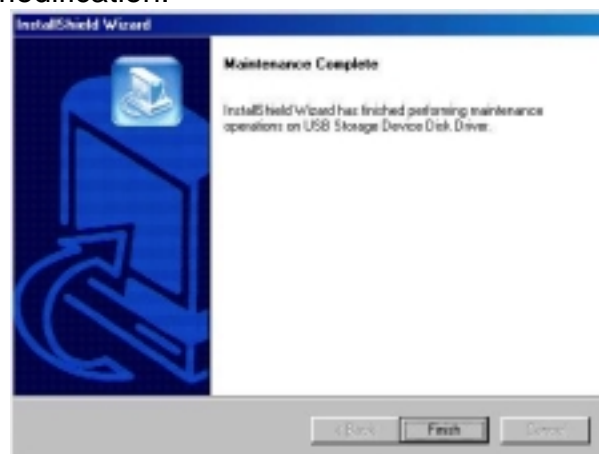
- If you have already installed the driver, run the "setup.exe" again. The following window will pop up.



- Select all files and click "Next".

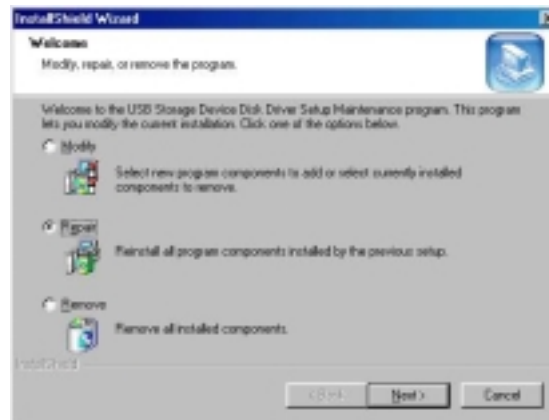


- Click "Finish" to complete the modification.

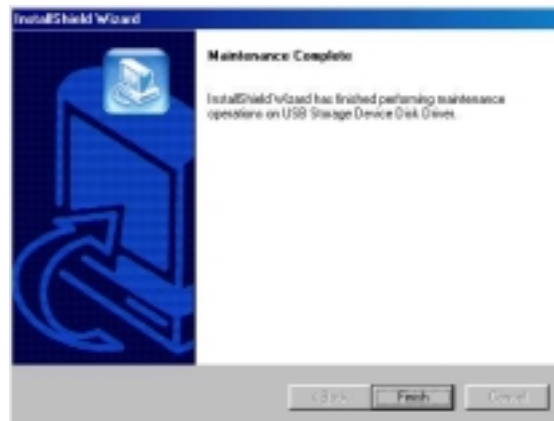


3.3 Repair driver for Win 98 / Win 98 SE

1. Again. Once you have installed the driver, running "setup.exe" again it will pop up the following window. If somehow the driver is wrong or damaged, select "Repair" and click "Next".

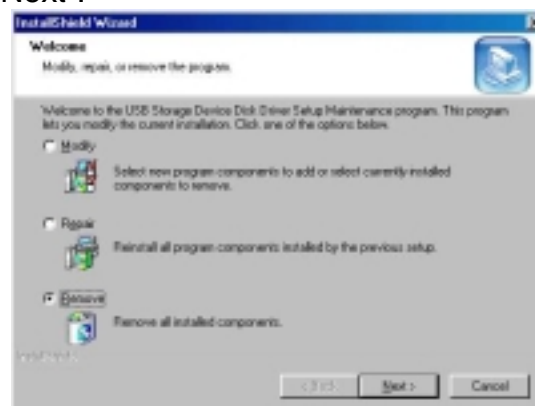


2. Click "Finish" and the damaged driver files will be "Repaired".

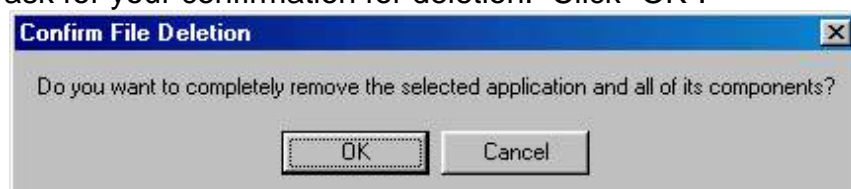


3.4 Remove driver from Win 98 / Win 98 SE

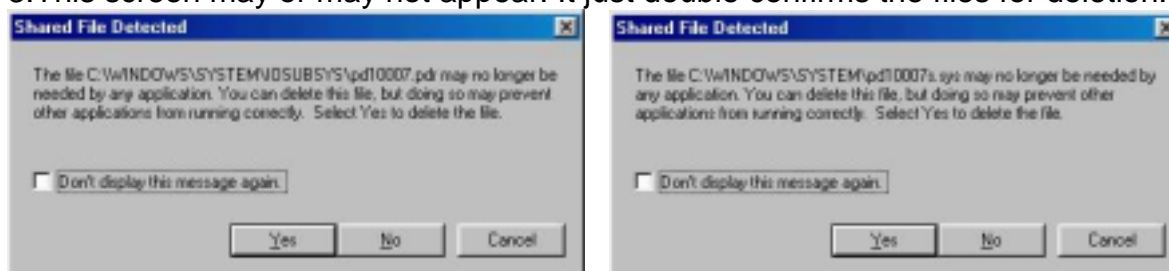
1. To remove driver from operating system, execute the "Setup.exe" from the driver Disk again. Select "Remove" and click "Next".



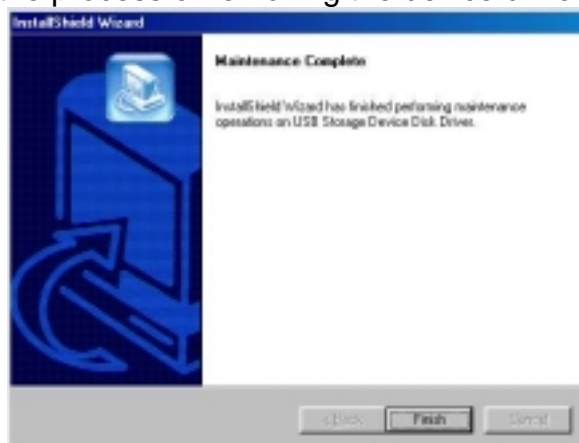
2. System will then ask for your confirmation for deletion. Click "OK".



3. This screen may or may not appear. It just double confirms the files for deletion. Just click "Yes".



4. Click "Finish" to complete the process of removing the device driver from the system.



3.5 Windows ME / 2000 / XP Installation

For these operating systems, NO Driver is needed because Windows has its built-in driver to support USB external drive. Simply plug the PDMP3 into the USB port and it will be recognised by the system. System will configure automatically without any further installation process.

Once the configuration is completed, you will see a "Removable Disk" drive in "My Computer".

3.6 Linux 2.4.0+ / Mac 8.6+ Installation

Again, No Driver is required for these two operating systems. Simply plug the PDMP3 into the USB port and the system will automatically find the device and make it accessible.

4. Important Notices

- (1) In **Windows 98/98SE**, If you plug the PDMP3 into the USB port before installing the driver, the system will ask you to load the driver disk to install the driver. **Be sure that you have unplugged PDMP3 before installing the driver.** (If you install the driver with PDMP3 plugged into the USB port, the driver may not be successfully installed.)
- (2) If you plug PDMP3 into the USB port, the system can find the PDMP3 but you are unable to access this PDMP3, please **FORMAT** the PDMP3 first.
- (3) Before unplugging PDMP3 from the USB port in Windows ME/2000/XP, please go to the bottom right and click the icon of the screen to stop the USB device. Otherwise, data copied to the PDMP3 may be incomplete or corrupted.

